

THE IPCO FLASH

The
IPCO
Mascot,
Basil the
Bricky



IPCO FACT:

...the IPCO FLASHING SYSTEM is the only complete flashing system available in self-adhesive rubberized asphalt. The System includes 30 or 40 mil self adhesive rubberized asphalt flashing, incorporating preformed corners, preformed end dams, and stainless steel drip edge, which also incorporates preformed inside and outside corners.

IN OUR LAST ISSUE...

...we asked if you are specifying flashing that can stand the test of time, such as self-adhesive rubberized asphalt. If you missed our last issue, and would like a copy sent, emailed or faxed to you, please give us a call at 800-383-8183 or email us at :

holton_ipco@ameritech.net

IPCO

1030 ATLANTIC DRIVE
WEST CHICAGO, IL 60185
800-383-8183
630-231-1181 FAX

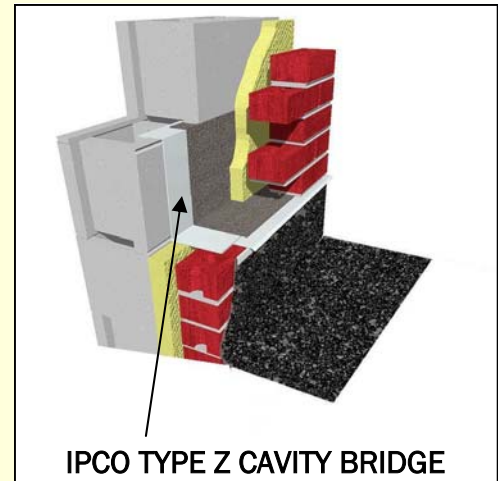
www.illinoisproducts.com

LINDA M. HOLTON

Sales Manager

holton_ipco@ameritech.net

The cure for sagging flashing... the **NEW** IPCO STAINLESS STEEL CAVITY BRIDGE



IPCO TYPE Z CAVITY BRIDGE

Illinois Products Corporation has a long history of developing effective and innovative products for the masonry industry. The IPCO Stainless Steel Cavity Bridge is no exception.

The IPCO Stainless Steel Cavity Bridge addresses the all-too-familiar problem of flashing sagging into the cavity at window openings, roof intersections and parapet roofs. The Type Z, Type L and Type F Cavity Bridges are designed to address these conditions, each in their own unique way.

The Type Z Cavity Bridge (see above) is made of Type 304, 15 mil stainless steel and is designed to step up into the cmu backup. The Type Z Cavity Bridge extends to meet the drip edge and will support the IPCO self-

adhesive rubberized asphalt flashing across the cavity.

The Type L Cavity Bridge (see below) also of Type 304, 15 mil stainless steel, is a versatile piece that can be used in a variety of conditions that require support across the cavity. The Type L Cavity Bridge is provided with anchor holes to anchor the bridge to the backup wall.

The Type F Cavity Bridge (see reverse) is a flat cavity bridge

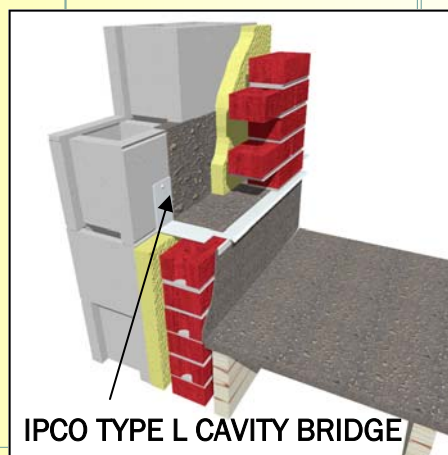
that is designed for use in parapet walls. Again using Type 304, 15 mil stainless steel, the Type F Cavity Bridge can be provided with predrilled holes for parapet wall anchoring systems.

The IPCO Stainless Steel Cavity Bridge is the perfect compliment to the IPCO Flashing System, which utilizes self-adhesive rubberized asphalt flashing, preformed corners and end dams, and stainless steel drip edge. In addition, IPCO

stainless steel drip edge is also available in preformed inside and outside corners.

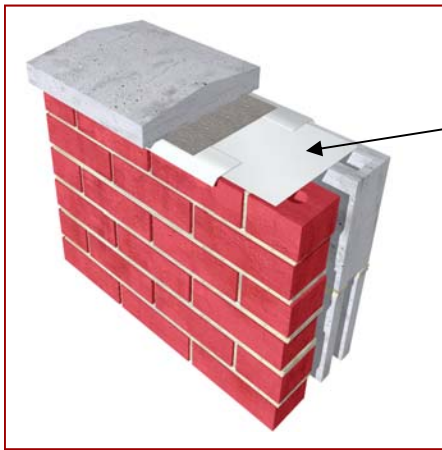
The addition of the IPCO Stainless Steel Cavity Bridge to the IPCO Flashing System allows designers to confidently design cavity walls with the knowledge that flexible flashings will be supported in all conditions.

Linda M. Holton, Sales Manager



IPCO TYPE L CAVITY BRIDGE

Our product catalog is available on CD—get yours today!



IPCO TYPE F STAINLESS STEEL CAVITY BRIDGE

dams, and stainless steel drip edge. The IPCO Flashing System is the only complete flashing system available in self-adhesive rubberized asphalt.

SPECIFICATIONS:

Width: 8"

Length: 4' & 8'

Material: Type 304, 15 mil (28 gauge) Stainless Steel

Standards: Complies to ASTM A-167

NOTE:

Design professional must detail and specify an anchorage system for the coping dependent upon the type of materials and system being used. Designer should indicate that all penetrations of the stainless steel flashing and the rubberized asphalt flashing be sealed. The above detail highlights the flashing materials for clarity and is not a complete wall detail for building purposes.

The IPCO Type F Flat Stainless Steel Cavity Bridge supports the IPCO Self Adhesive Rubberized Asphalt flashing at the top of the cavity opening of a parapet wall.

The Type F Flat Stainless Steel Cavity Bridge acts as additional protection at the top of the cavity wall where leakage problems may begin. Flexible flashings such as rubberized asphalt must be supported across cavity openings. The IPCO Type F Cavity Bridge provides the necessary

support in a corrosion-free material. Additionally, the IPCO Type F Cavity Bridge eliminates field fabrication of flashing support pieces and provides easy installation and better protection at the top of the parapet wall.

The Type F Flat Cavity Bridge can be provided with anchorage holes if specified at time of order, making the Type F Cavity Bridge the best solution to parapet wall flashing issues.

The Type F Flat Stainless Steel Cavity Bridge is constructed of Type 304, 15 mil (28 gauge) stainless steel, and complies with ASTM A-167.

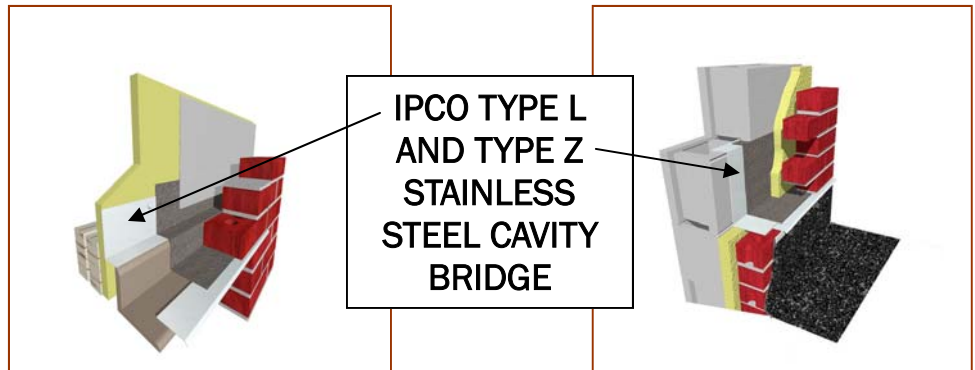
Use the IPCO Type F Cavity Bridge as a compliment to the complete IPCO Flashing System, including 30 or 40 mil self adhesive rubberized asphalt flashing, preformed flashing corners and end

The IPCO TYPE L AND TYPE Z STAINLESS STEEL CAVITY BRIDGE will provide positive support of IPCO Self Adhesive Rubberized Asphalt flashing over cavity openings. The Type L and Type Z Stainless Steel Cavity Bridge can be used as flashing support in conditions such as above and below window openings and roof intersections, or any condition that requires support of flexible flashing.

The Type L and Type Z Cavity Bridge eliminate the potential for sagging of the flexible flashings into the cavity, and provides a simple and easily installed method of support. It eliminates field fabrication of support angles which may leave cavities vulnerable.

The Type L and Type Z Cavity Bridge are made of 15 mil (28 gauge) Type 304 stainless steel. The Type L Cavity Bridge is provided with predrilled holes for support to the backup wall. Both types of cavity bridge are sized to fit the specified cavity opening, with total horizontal plus vertical measurements equaling 8" or 14".

Use the IPCO Cavity Bridges as a compliment to the complete IPCO Flashing System, including 30 or 40 mil self adhesive rubberized asphalt flashing, preformed flashing corners and end dams,



IPCO TYPE L AND TYPE Z STAINLESS STEEL CAVITY BRIDGE

and stainless steel drip edge. The IPCO Flashing System is the only complete flashing system available in self-adhesive rubberized asphalt.

SPECIFICATIONS:

Width: Total horizontal and vertical dimensions can equal 8" or 14"

Length: 4' or 8'

Material: Type 304, 15 mil (28 gauge) Stainless Steel

Standards: Complies to ASTM A-167

Installation: The Type L Cavity Bridge should be fastened to the back-up wall. Both the Type L and Type Z Cavity Bridge are to be installed prior to the installation of the IPCO Self Adhesive Rubberized Asphalt flashing.



ILLINOIS PRODUCTS CORPORATION

1030 Atlantic Drive West Chicago, IL
60185

800-383-8183 630-231-1181 fax

www.illinoisproducts.com

email to: holton_ipco@ameritech.net