

IPCO ADJUSTABLE WEEP VENT*

*Patent pending

1. Product Name

IPCO Adjustable Weep Vent

2. Manufacturer

Illinois Products Corporation (IPCO)
423 Joseph Drive
South Elgin, IL 60177
800-383-8183; 847-289-2800
847-289-2804 (fax)
www.illinoisproducts.com

3. Product Description

The IPCO Adjustable Weep Vent is the only weep vent that adjusts in length to accommodate cavities of various widths, filling the entire cavity. Since the IPCO vent extends all the way to the backup wall, and the bottom of the weep extension is open, mortar cannot cause weep vent blockages.

With other vents that do not extend into the cavity, a single blob of mortar at the vent base will block exiting water.

Approximately 5/8" of the outer portion of the IPCO vent contains a nylon mesh, available in a variety of colors, to block insect entry and debris from entering the opening of the vent.

Since the IPCO Adjustable Weep Vent is non-compressible, it will not be crushed or compressed during construction.

The IPCO Adjustable Weep Vent is more aesthetically pleasing to the eye than conventional weep systems. The IPCO vent works with the mortar collection system and the flashing system to facilitate the exit of water from the cavity wall. Whether using a mortar capture system or a mortar deflection system, the IPCO Adjustable Weep Vent will be an asset to the wall's drainage capabilities. The IPCO Weep Vent can also be used at the top of the wall structure as a vent.

Use in conjunction with the entire IPCO Flashing System, including self-adhesive rubberized asphalt flashing, preformed corners and end dams, drip edge, preformed drip edge corners, and cavity bridge for total cavity wall protection.

4. Technical Data

Dimensions:

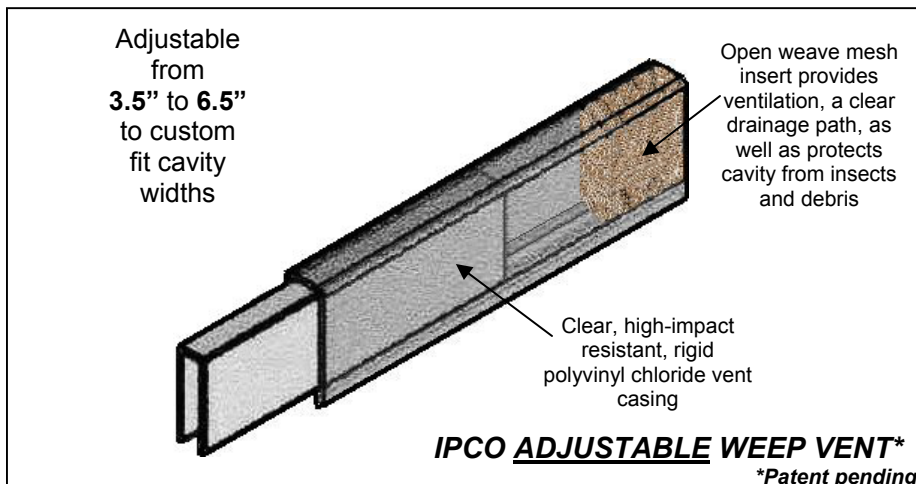
- Weep Vent Base: 3.625"(L) x 1"(H)
- Weep Vent Extension: 3.0"(L) x .8"(H)

Material: Clear, rigid high impact resistant polyvinyl chloride with good low temperature performance without migrating plasticizers.

5. Installation

Install the IPCO Adjustable Weep Vent while laying the first course of brick every 24" o.c. or as local building codes require. Install IPCO weep vent directly on the flashing, with the open edge down, and be sure to remove all mortar from the bed joint where the weep vent will lay. When installing the IPCO Adjustable Weep Vent at the top of the wall as a vent, be sure to maintain a clear opening for the vent at both faces of the weep vent.

If no rigid insulation board is being installed in the cavity, extend the weep vent extension to the backup wall. If rigid insulation board is



being installed in the cavity, extend the weep vent extension to the face of the rigid insulation board.

Installation with mortar capture systems:

Place the mortar capture material over the weep vent. The vent extension should extend all the way to the backup wall or the face of the rigid insulation board.

Installation with mortar deflection systems:

For those products that utilize an integrated rigid insulation board and drainage mat, extend the weep vent to the face of the drainage mat.

6. Availability and Cost

All Illinois Products Corporation masonry products and cost information are available through a nationwide network of masonry and building supply distributors.

7. Warranty

The recommendations and properties attributed to the products are based upon what is believed to be reliable information. Illinois Products Corporation warrants materials to be of good quality and will replace unused material proven to be defective. No expressed or implied warranty of installed material is made because satisfactory results depend not only on product quality but also upon factors that are beyond IPCO's control.

8. Maintenance

No maintenance is required after proper installation.

9. Technical Services

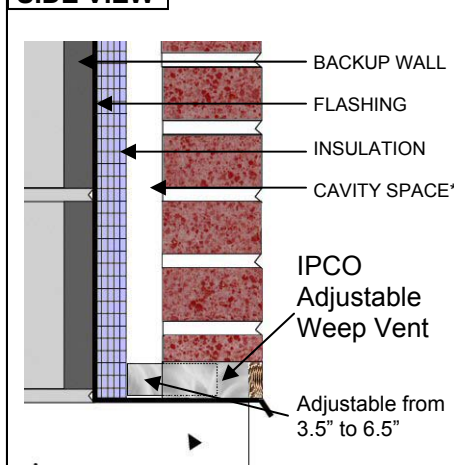
Contact the manufacturer for any required technical services. IPCO Material Safety Data Sheets should be read and understood by all personnel before using the products.

10. Filing Systems

Product information is available from the manufacturer in the following formats:

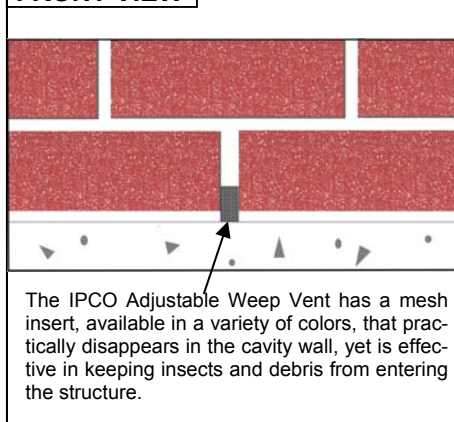
- Complete IPCO product line catalog in printed and CD formats
- Online access to all data sheets at: www.illinoisproducts.com

SIDE VIEW



* For clarity, there is no mortar deflection or mortar capture system shown. For coordination with these products, please refer to Paragraph 5— Installation.

FRONT VIEW



Revised 01/2008