

IPCO TYPE L AND TYPE Z CAVITY BRIDGES IN STAINLESS STEEL

1. Product Name

IPCO Type L and Type Z Cavity Bridges in stainless steel

2. Manufacturer

Illinois Products Corporation (IPCO)
423 Joseph Drive
South Elgin, IL 60177-2268
800-383-8183; 847-289-2800
847-289-2804 (fax)
www.illinoisproducts.com

3. Product Description

The IPCO Type L and Type Z stainless steel cavity bridges will provide positive support of IPCO Self-Adhesive Rubberized Asphalt Flashing over cavity openings. The Type L and Type Z Cavity Bridges can be used as flashing support in conditions such as above and below window openings and roof intersections, or at any other condition that requires support of flexible flashing.

The Type L and Type Z Cavity Bridges eliminate the potential for sagging of the flexible flashing into the cavity, and provides a simple and easily installed method of support for sealing overlapped seams which are especially vulnerable to sagging. It eliminates field fabrication of support angles which may leave cavities vulnerable.

The Type L and Type Z Cavity Bridges are made of durable Type 304 Stainless Steel. The Type L Cavity Bridge is provided with predrilled holes for anchoring to the backup wall. Both types of cavity bridge are sized to fit the specified cavity opening, with total horizontal and vertical measurements equaling 8" or 14" total dimension.

The IPCO Type L and Type Z Cavity Bridges compliment the complete IPCO Flashing System, a comprehensive system that provides continuous moisture barrier protection in masonry walls. The IPCO Flashing System (consisting of self-adhesive rubberized asphalt flashing, preformed corners and end dams in self-adhesive rubberized asphalt, stainless steel or copper, drip edge in stainless steel or copper, and termination bar) is the most comprehensive flashing system available.

For complete protection of parapet walls, IPCO has developed the Type F Cavity Bridge for Parapet Walls. This comprehensive system addresses the issue of moisture penetration at this most vulnerable condition. See the IPCO catalog or website for information on the Type F Cavity Bridge for Parapet Walls.

4. Technical Data

- Material: Type 304 grade stainless steel 27 gauge (15mil) and complies to ASTM A-167
- Dimensions: Horizontal and Vertical dimensions fabricated to meet specific field conditions. Total horizontal and vertical dimensions can equal 8" or 14" as required.

- Length: 4' or 8' sections

5. Installation

The substrate surface should be cleaned of dust, dirt and foreign matter. All sharp protrusions should be eliminated and surfaces should be dry. All data sheets and installation guides for the entire IPCO Flashing System should be read and understood by all personnel prior to installation of the IPCO Type L and Type Z Cavity Bridges.

Install IPCO Type L Cavity Bridge by fastening to the backup wall with concrete fasteners using the predrilled holes. The IPCO Type Z Cavity Bridge will be installed laid into the CMU backup wall and does not require additional mechanical fastening. Both the Type L and Type Z Cavity Bridges should be sized to extend to the IPCO Drip Edge (as shown).

IPCO Preformed End Dams are to be installed after the IPCO Cavity Bridge. IPCO Self-Adhesive Rubberized Asphalt flashing is to be installed over the cavity bridge and overlapped onto the IPCO Preformed End Dams.

Do not use silicone or polysulfide sealants in contact with IPCO Flashing material or under IPCO Drip Edge or Drip Edge Corners. For additional information on the installation of the IPCO Flashing System, refer to the IPCO Flashing System data sheet as well as the data sheets for each of the components of the IPCO Flashing System.

6. Availability and Cost

All Illinois Products Corporation masonry products and cost information are available through a nationwide network of masonry and building supply distributors.

7. Warranty

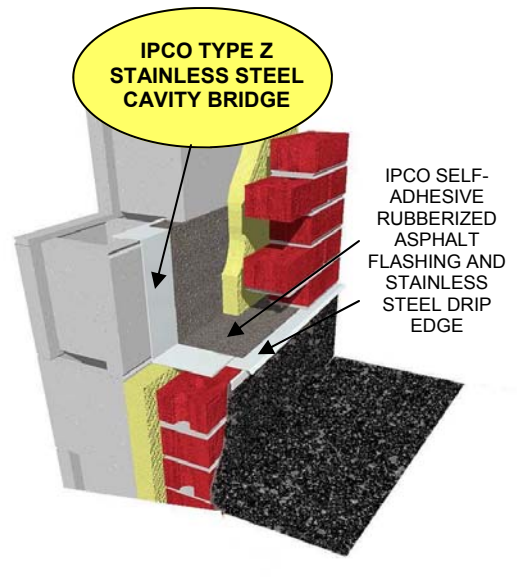
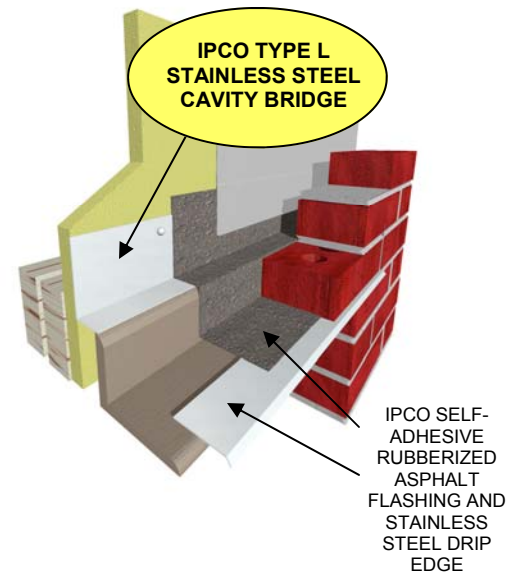
The recommendations and properties attributed to the products are based upon what is believed to be reliable information. Illinois Products Corporation warrants materials to be of good quality and will replace unused material proven to be defective. No expressed or implied warranty of installed material is made because satisfactory results depend not only on product quality but also upon factors that are beyond IPCO's control.

8. Maintenance

No maintenance is required after proper installation.

9. Technical Services

Contact the manufacturer for any required



technical services. Details and suggested application drawings are available on each individual product data sheet. IPCO Material Safety Data Sheets should be read and understood by all personnel before using the products.

10. Filing Systems

Product information is available from the manufacturer in the following formats:

- Complete IPCO product line catalog in printed and CD formats
- Online access to all data sheets at: www.illinoisproducts.com

Revised 01/2007