

IPCO SELF-ADHESIVE RUBBERIZED ASPHALT FLASHING

1. Product Name

IPCO Self-Adhesive Rubberized Asphalt Flashing

2. Manufacturer

Illinois Products Corporation (IPCO)
423 Joseph Drive
South Elgin, IL 60177-2268
800-383-8183; 847-289-2800
847-289-2804 (fax)
www.illinoisproducts.com

3. Product Description

IPCO Flashing is provided in two thicknesses, 30mil and 40mil. The material consists of rubberized asphalt waterproofing laminated to a tough 4mil high-density, cross laminated polyethylene film. IPCO Flashing is applied by removing the release paper from the rubberized asphalt to expose the adhesive surface.

The high-grade commercial adhesive of IPCO Flashing will adhere to virtually any backup wall material, including masonry, concrete and plywood, eliminating flashing blow-offs or tears. When overlapping flashing sections, this adhesive surface adheres firmly to the next section, forming a continuous moisture barrier within the cavity wall.

IPCO Flashing is strong yet flexible, has a high puncture resistance, and can be easily field fabricated to meet jobsite conditions.

Rubberized asphalt/polyethylene flashing and moisture barriers have been proven to be effective for over 30 years. Protected from ultra-violet light, IPCO Flashing resists rot or decay from mold, mildew, corrosion, and plasticizer migration, unlike metals and PVC.

IPCO Flashing Primer, a rubber based material in solvent solution, is used to prepare surfaces for flashing application. IPCO Flashing Primer is an adhesive activator that should be used in extremely dusty or dirty conditions or in temperatures under 40°F, for maximum adhesive protection.

IPCO Flashing Mastic is a rubberized asphalt based material used to seal the top edge of the flashing installation, as well as at each overlap and around pipe and other penetrations.

4. Technical Data

IPCO SELF-ADHESIVE RUBBERIZED ASPHALT FLASHING

- Total Thickness: 30 & 40mil
- Membrane Thickness: 26 & 36mil
- Thickness of Polyethylene Film: 4mil
- ASTM D781: Puncture Resistance of Film (kg/cm): 110 minimum
- ASTM E154: Puncture Resistance of Composite Membrane (lbs): 40 min
- ASTM D412 (modified) Tensile

Strength of Composite Membrane:
750psi minimum

- ASTM D882 (modified) Elongation of Rubberized Asphalt:: 400% minimum
- ASTM E96 Method B Water Vapor Transmission (permeance)(grains/sq.ft./hr in HG): 0.1 maximum

5. Installation

The substrate surface should be cleaned of dust, dirt and foreign matter. All sharp protrusions should be eliminated and surfaces should be dry.

IPCO Flashing Primer is recommended to be applied on building surfaces before applying the flashing membrane, especially if temperatures are below 40°F. Apply the primer at a rate of 250-400 square feet per gallon by brush or roller. Do not thin. Primer is to remain tacky. Flashing can be placed 30 to 60 minutes after primer is applied. In temperatures below 40°F, any surface receiving flashing (including flashing overlaps) should first be primed with IPCO Flashing Primer.

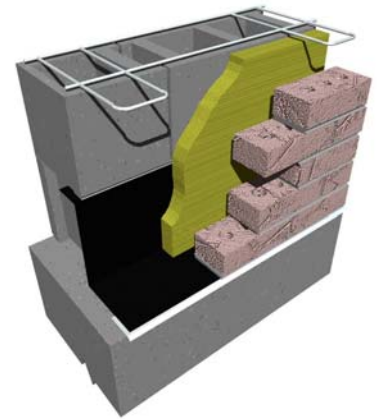
Drip edge is to be installed first by laying drip edge in a bead of caulk, then all preformed corners and end dams, then the roll flashing. Recess the flashing 1" from the vertical face of the masonry wall. Overlaps of flashing should be a minimum of 4". Where flashing sections overlap, the seam created by the overlap should be sealed with IPCO Mastic. IPCO Mastic should never be used on the adhesive side of the IPCO Flashing, within 1" of the face of the masonry wall, or as an adhesive under drip edge.

If the flashing material is terminated in a vertical condition, the IPCO Termination Bar should be used and caulked as directed. If the flashing is installed laid-back into a CMU backup wall, the termination bar is not necessary.

After installation of the material, the flashing should be inspected and all protrusions or open seams should be patched with a clean piece of the IPCO Flashing and IPCO Mastic. IPCO Mastic is used on the top of the flashing for sealing purposes and should never touch the adhesive side of the material.

IPCO Flashing is recommended for concealed applications only, and should be covered within 30 days to prevent prolonged exposure to sunlight. If rubberized asphalt or mastic is installed near or outside the exterior face of the masonry wall, sunlight and heat from the sun may cause softening and oozing resulting in staining or dripping. Additionally, flashing should not be installed in temperatures below 25°F.

Do not use silicone or polysulfide sealants in contact with IPCO Flashing, and do not allow IPCO Flashing to come in to contact with any dissimilar composite material such



as EPDM or PVC flashing.

A flashing system installation guide is available from the manufacturer. Additional assistance is available from the manufacturer or authorized distributor of Illinois Product Corporation products.

6. Availability and Cost

All Illinois Products Corporation masonry products and cost information are available through a nationwide network of masonry and building supply distributors.

7. Warranty

The recommendations and properties attributed to the products are based upon what is believed to be reliable information. Illinois Products Corporation warrants materials to be of good quality and will replace unused material proven to be defective. No expressed or implied warranty of installed material is made because satisfactory results depend not only on product quality but also upon factors that are beyond IPCO's control.

8. Maintenance

No maintenance is required after proper installation.

9. Technical Services

Contact the manufacturer for any required technical services. Details and suggested application drawings are available on each individual product data sheet. IPCO Material Safety Data Sheets should be read and understood by all personnel before using the products.

10. Filing Systems

Product information is available from the manufacturer in the following formats:

- Complete IPCO product line catalog in printed or CD formats
- Online access to all data sheets at: www.illinoisproducts.com

Revised 01/2007



ILLINOIS PRODUCTS CORPORATION
423 Joseph Drive South Elgin, IL 60177

www.illinoisproducts.com
800-383-8183 847-289-2804 fax