

IPCO TERMINATION BAR

1. Product Name

IPCO Termination Bar

2. Manufacturer

Illinois Products Corporation (IPCO)
423 Joseph Drive
South Elgin, IL 60177-2268
800-383-8183; 847-289-2800
847-289-2804 (fax)
www.illinoisproducts.com

3. Product Description

The IPCO Termination Bar is an important piece of the IPCO Flashing System and is to be used when the flashing is terminated in a vertical position in the cavity wall. The IPCO Termination Bar not only provides additional support for the flashing material, but also provides an effective and easy-to-use caulk edge for the top seam of the flashing installation.

The IPCO Termination Bar is compatible with any backup wall composition. It is provided with 1/4" predrilled screw holes located every 8" along the length of each piece. The holes allow for easy installation of concrete screws or other mechanical fasteners which will hold the flashing securely to the backup wall. The added advantage of the predrilled holes takes the guess work out of the installation of the termination bar, eliminating the need for self-tapping fasteners, and maintaining even and equal pressure along the entire length of the termination bar.

The IPCO Termination Bar's unique lipped design allows the installer to run a bead of sealant along the top terminating edge of the bar and flashing, thus ensuring that any water running down the backup wall will not be allowed to penetrate behind the vertically terminating flashing.

The IPCO Termination Bar is provided in 8' sections. For those areas which require less than an 8' length, each bar can be easily cut to size to accommodate any specific application. Additionally, the IPCO Termination Bar can save approximately 75% over the cost of stainless steel, which can translate into thousands of dollars on a large commercial structure. The IPCO Termination Bar is an economical option that does not sacrifice performance.

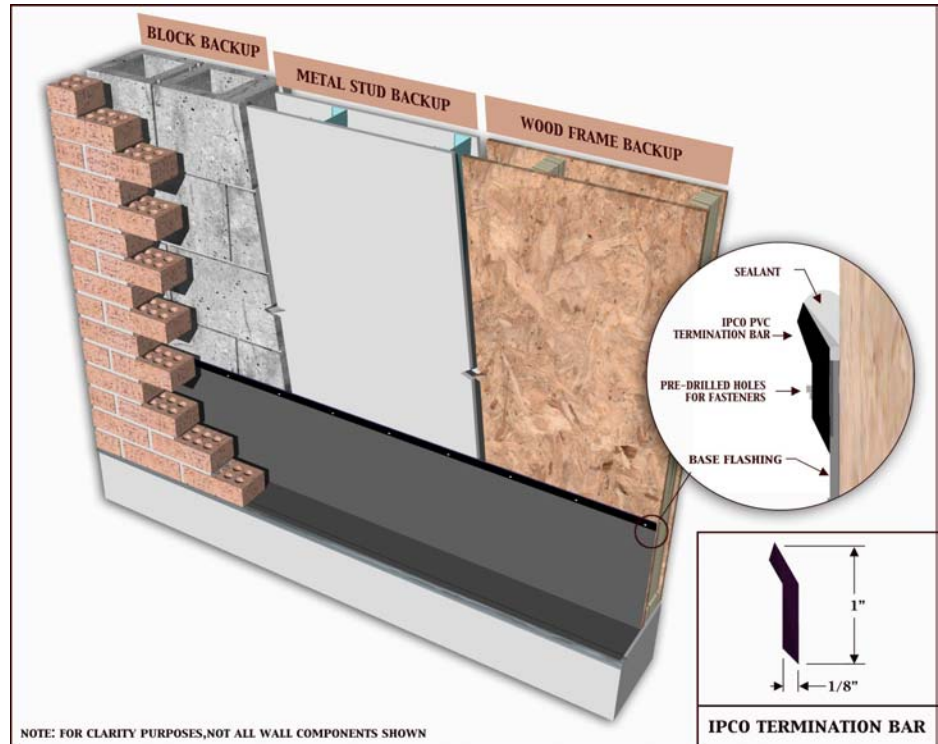
4. Technical Data

- Dimension: 1/8" thick by 1" wide by 8' long
- Material: PVC
- Predrilled Holes: 1/4" holes spaced 8" o.c.

5. Installation

The substrate surface should be cleaned of dust, dirt and foreign matter. All sharp protrusions should be eliminated and surfaces should be dry. All data sheets and installation guides for the entire IPCO Flashing System should be read and understood by all personnel prior to installation of the IPCO Termination Bar.

When the flashing material is terminated in a



vertical condition, the IPCO Termination Bar should be used and caulked at the top edge. Install the termination bar with concrete screws or other mechanical fastening devices. Place the bent portion of the termination bar just above the top edge of the flashing being secured (see detail inset above).

Do not use silicone or polysulfide sealants in contact with IPCO Flashing material. Do not torque screws excessively to cause the termination bar to split.

For additional information on the installation of the IPCO Flashing System, refer to the IPCO Flashing System data sheet as well as the data sheets for each of the components of the IPCO Flashing System.

6. Availability and Cost

All Illinois Products Corporation masonry products and cost information are available through a nationwide network of masonry and building supply distributors.

7. Warranty

The recommendations and properties attributed to the products are based upon what is believed to be reliable information. Illinois Products Corporation warrants materials to be of good quality and will replace unused material proven to be defective. No expressed or implied warranty of installed material is made because satisfactory results depend not only on product quality but also upon factors that are beyond IPCO's control.

8. Maintenance

No maintenance is required after proper installation.

9. Technical Services

Contact the manufacturer for any required technical services. Details and suggested application drawings are available on each individual product data sheet. IPCO Material Safety Data Sheets should be read and understood by all personnel before using the products.

10. Filing Systems

Product information is available from the manufacturer in the following formats:

- Complete IPCO product line catalog in printed and CD format.
- Online access to all data sheets at: www.illinoisproducts.com

Revised 01/2007



ILLINOIS PRODUCTS CORPORATION
423 Joseph Drive South Elgin, IL 60177

www.illinoisproducts.com
800-383-8183 847-289-2804 fax