

IPCO MORTAR GRAB

FOR MORTAR COLLECTION

1. Product Name

IPCO Mortar Grab

2. Manufacturer

Illinois Products Corporation (IPCO)
423 Joseph Drive
South Elgin, IL 60177-2268
800-383-8183; 847-289-2800
847-289-2804 (fax)
www.illinoisproducts.com

3. Product Description

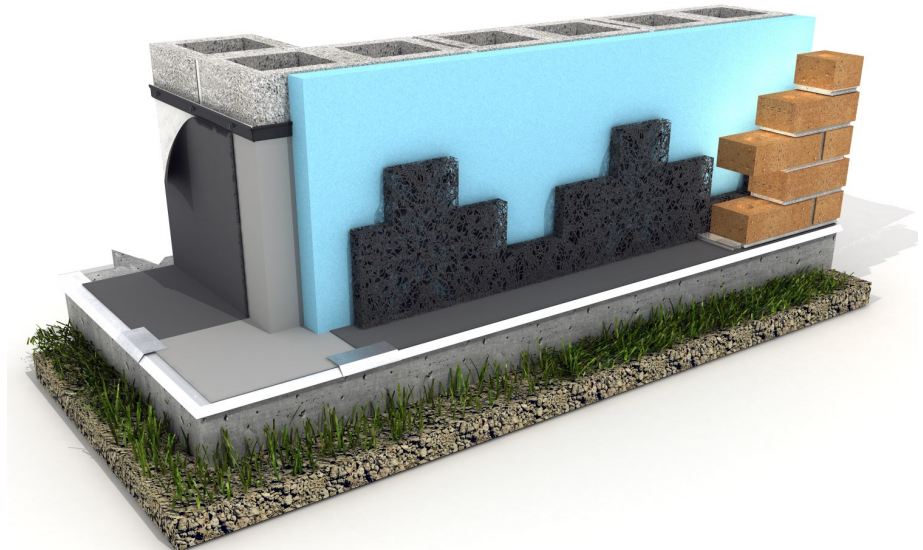
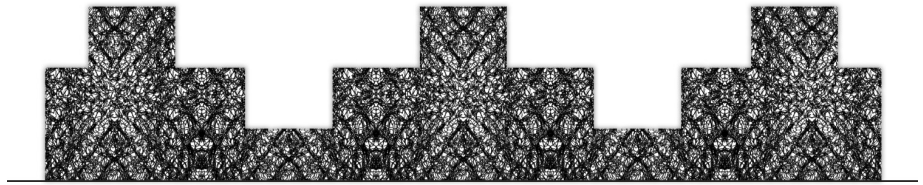
Mortar Grab is a three dimensional mortar collection device which, when used in conjunction with the IPCO thru-wall flashing system in a cavity wall, will capture and suspend mortar above the weep vents. The unique tri-level design allows mortar to accumulate on multiple levels, thus allowing moisture to filter down in the wall system and exit through the weep vents. The material is manufactured of heavy nylon monofilaments which are fused at their intersections and combined with a flat, two dimensional layer on the back. Approximately 95% of the entangled filament mat is open and available for the flow of water or air. IPCO Mortar Grab is a part of a complete flashing system of IPCO products including flashing, drip edge, preformed drip edge corners, preformed flashing corners and end dams, termination bar, and patented weep vents.

4. Technical Data

Material.....Nylon 6
Thickness.....1.00"
Length.....4.0'
Height.....10.0"
Color.....Black
Weight.....0.88 oz / lin foot
Melting Temperature.....420°
Packaging......96 line feet / case

5. Installation

IPCO Mortar Grab is easily installed by masons. It does not require any fasteners, adhesives, or special tools. After the first two courses of brick are laid, separate the interlocked 4' pieces and place a continuous row of IPCO Mortar Grab (stair step portion facing upward) in the cavity or collar joint on the flashing against the inside of the outer wythe of brick at the base of the wall. Mortar Grab should be installed not only at the base of the wall, but also over all wall openings, shelf angles, sills, lintels, and at every floor level. For wall cavities that exceed 10' in height, place an additional continuous Mortar Grab section on wall reinforcing anchors or ties between the 10' and 11' level. Make certain the wall flashing extends at least 6" above the uppermost horizontal plane of IPCO Mortar Grab.



6. Availability and Cost

All Illinois Products Corporation products and prices are available through a nationwide network of masonry and building supply distributors.

7. Warranty

The recommendations and properties attributed to the products are based upon what is believed to be reliable information. Illinois Products Corporation warrants materials to be of good quality and will replace unused material proven to be defective. No expressed or implied warranty of installed material is made because satisfactory results depend not only on product quality but also upon factors that are beyond IPCO's control.

8. Maintenance

No maintenance is required after proper installation.

9. Technical Services

Contact the manufacturer for any required technical services. Details and suggested application drawings are available on each individual product data sheet. IPCO Material Safety Data Sheets should be read and understood by all personnel before using the products.

10. Filing Systems

Product information is available from the manufacturer in the following formats:

- Complete IPCO product line catalog in printed and CD formats
- Online access to all data sheets at: www.illinoisproducts.com



ILLINOIS PRODUCTS CORPORATION
423 Joseph Drive
South Elgin, IL 60177

www.illinoisproducts.com
Phone: 800-383-8183
Fax: 847-289-2804